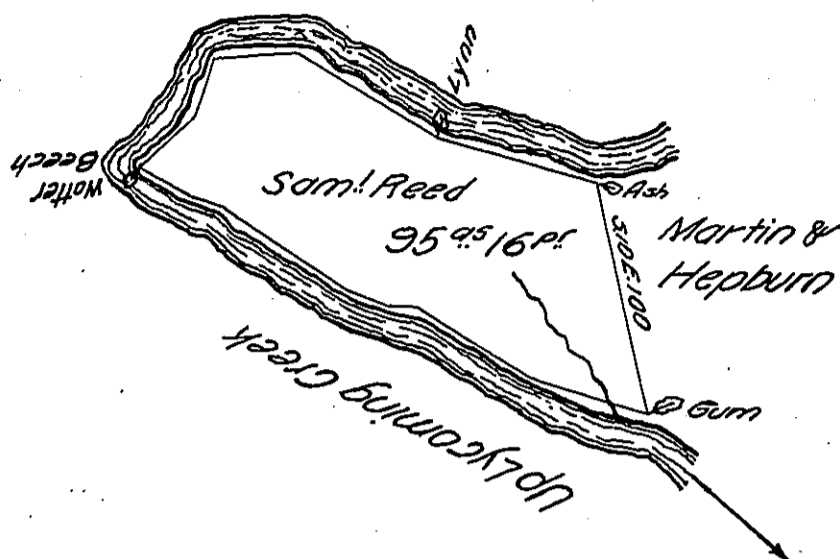


*Begining at the Gum
thence up Lycoming Creek*

- N 67 1/2 W 56
- N 53 W 53
- N 78 W 15
- N 65 W 20
- N 54 W 62
- N 69 W 13
- N 57 W 26
- N 50 E 32
- N 27 E 27
- East 40
- S 64 E 66
- S 57 E 68 1/2
- to the Ash



Situate on the East side of Lycoming Creek in Loyalsock Township Lycoming County Including an Improvement Survey^d on the 9 day of December 1800 for Samuel Reed by Virtue of his Warrant bearing date on the Sixth day of November 1800 Containing Ninty five Acres Sixteen Perches and the usual Allowance of Six P: Cent & C

*To Samuel Cochran Esq:
Surveyor General*

Henry Donnel D. S.

IN TESTIMONY that the above is a copy of the original remaining on file in the Department of Internal Affairs of Pennsylvania, made conformably to an Act of Assembly approved the 16th day of February, 1833, I have hereunto set my Hand and caused the Seal of said Department to be affixed at Harrisburg, this twenty ninth day of August 1906

Joseph B. Brown
Secretary of Internal Affairs.